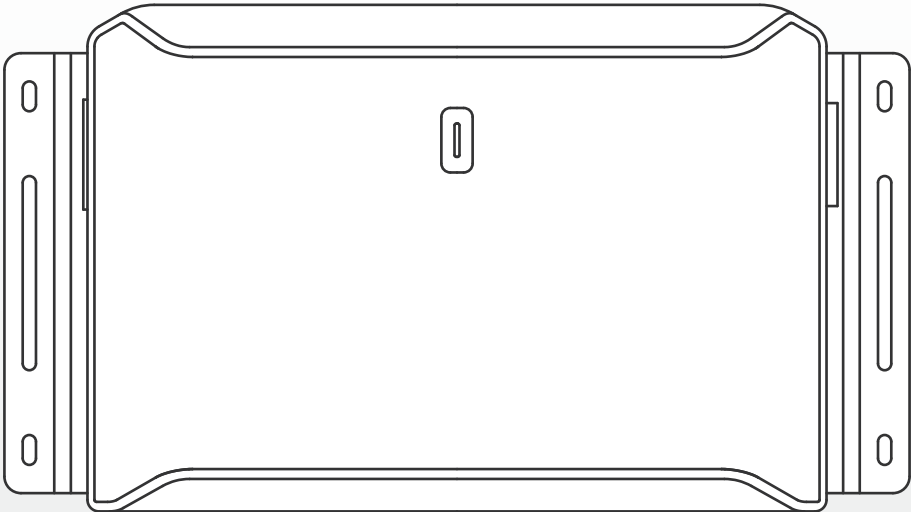


# User Manual



# DC 800

Alternator Charger

# Contents

<b>Product List</b>	01
<b>Product Description</b>	02–03
Specifications	02
Overview	03
LED Indicator	03
<b>Instructions for Use</b>	04–10
Wiring	04–05
Mounting	06–07
Power ON/OFF and Connection	08
Charge Mode	09
Reverse Charge Mode	09–10
Battery Maintenance Mode	10
Unplug Cables	10
<b>Storage and Maintenance</b>	11
<b>FAQ(Frequently Asked Question)</b>	12
<b>FCC Warning</b>	13

# Disclaimer

Before using this product, please read this user manual carefully to ensure that you fully understand the product and can use it correctly. After reading this user manual, please keep it in a safe place for future reference. Improper use of this product may cause serious injury to yourself or others, or result in product damage and property loss. By using this product, you are deemed to have understood, recognize and accepted all the terms and contents of this document. The Company shall not be responsible for any damages caused by the user's failure to use this product in accordance with this user manual.

In accordance with laws and regulations, the Company reserves the right of final interpretation of this document and all documents related to this product. This document is subject to change, update, revision or termination without notice. Please visit our website for the latest product information.

- The company shall not be held responsible for any damage caused by force majeure (e.g. fire, typhoon, flood, earthquake) or use under other abnormal circumstances by the customer.
- The company bears no responsibility for loss caused by the use of non-standard connectors.
- The Company shall not be liable for any damage caused by non-compliance with standard operation.

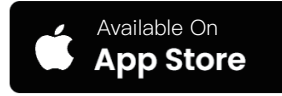
Please do not disassemble the product. Otherwise, the warranty will be voided.

# Product List

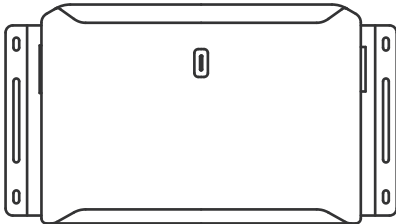
## APP

You can connect this product via APP to view information, control the device and personalize settings.

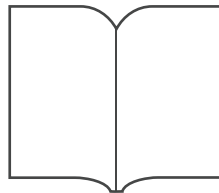
[Scan the QR code to download our Smart Control APP.](#)



## What's in the Box



Alternator Charger\*1



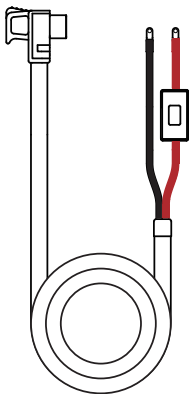
User Manual\*1



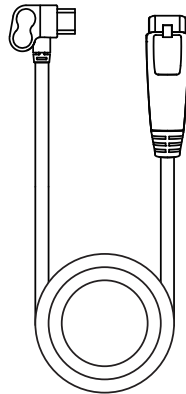
Warranty\*1



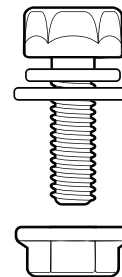
M4.2\*16 self-tapping screw\*6



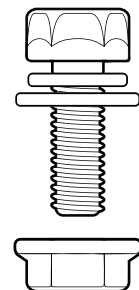
Vehicle Battery Cable with Fuse (5m) \*1



Portabel Power station Cable (1m) \*1



M4 bolt\*4  
M4 nut\*4



M6 bolt\*4  
M6 nut\*4  
(spare for battery)

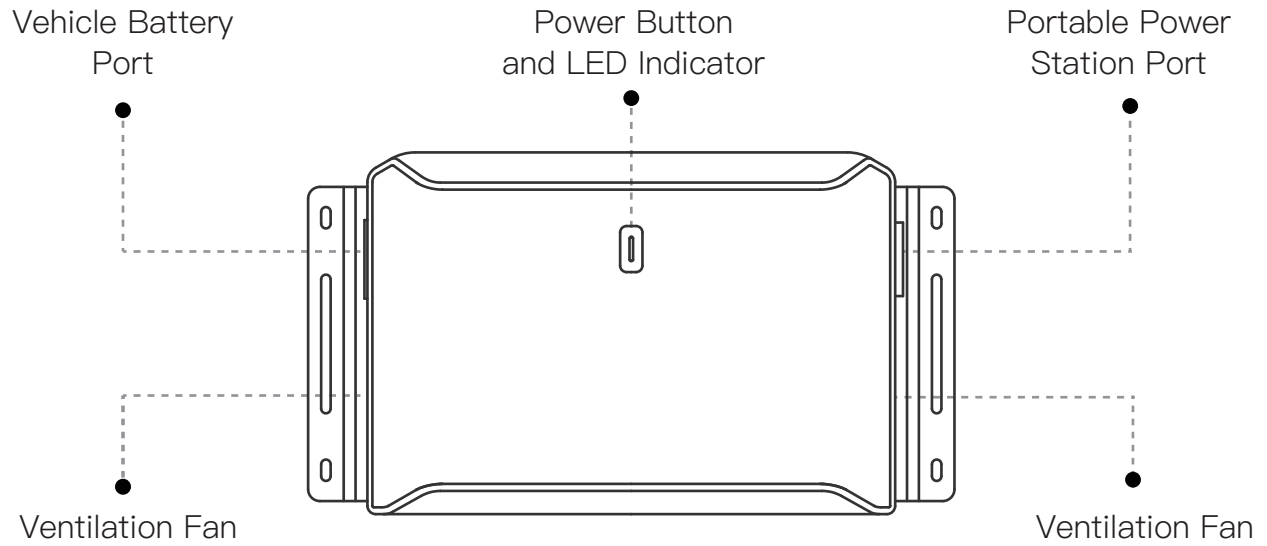
# Product Description

## Specifications

Mode		
Charge Mode	Input	12Vdc/24Vdc(11Vdc~31Vdc)
	Output	40Vdc~60Vdc, 800W Max
Reverse Charge Mode	Input	44.6Vdc~60Vdc
	Output	14.2Vdc/27.6Vdc, 800W Max
Battery Maintenance Mode	Input	44.6Vdc~60Vdc
	Output	14.2Vdc/27.6Vdc, 100W Max

General Info	
Rated Current of Fuse Cable	125A
Protection Type	Overcurrent Protection, Short Circuit Protection, Over Voltage Protection, Under Voltage Protection, High Temperature Protection, Low Temperature Protection.
Cable Guage	7AWG(10mm <sup>2</sup> )
Working Temperature	-4°F~140°F (-20°C~60°C)
Storage Temperature	-22°F~158°F (-30°C~70°C)
Storage Humidity	≤95%
Dimension	10.73*6.0*3.13in (272.5*152.5*79.6mm)
Net Weight	2.45lb (1.11kg)

# Overview



## LED Indicator

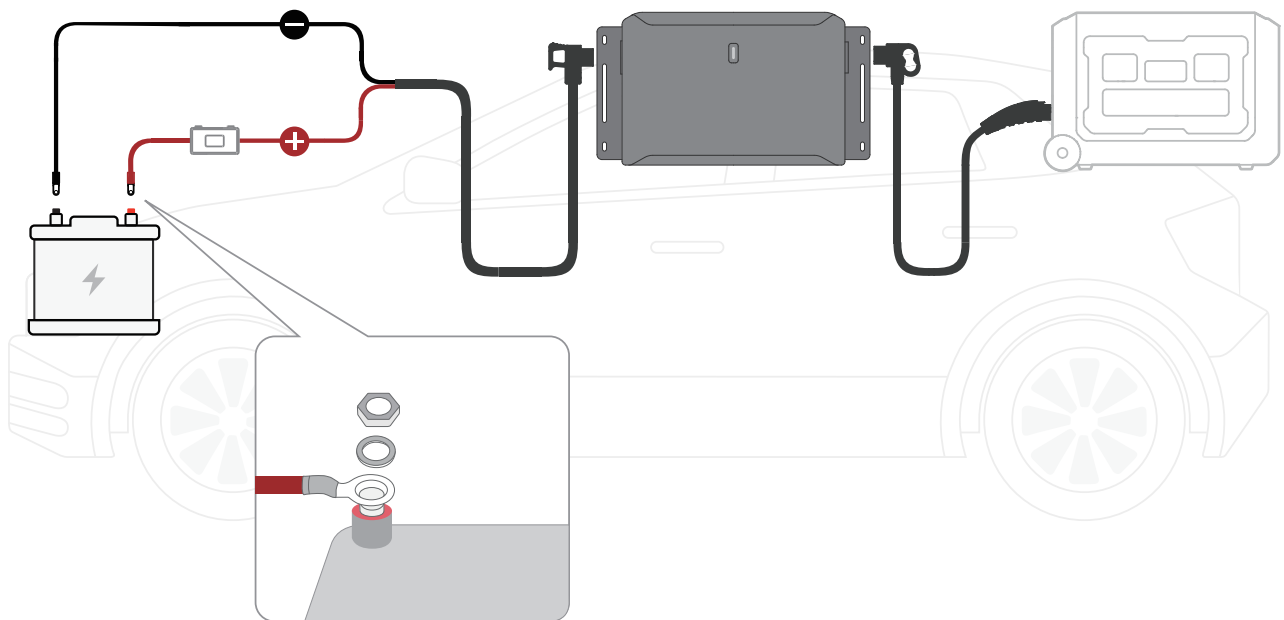
Color	State	Indication
Green	Solid	In Charge Mode
	Flash	Charge Mode in standby
White	Solid	In Reverse Charge Mode
	Flash	Reverse Charge Mode in standby
Blue	Solid	In Battery Maintenance Mode
	Flash	Battery Maintenance Mode in standby
Red	Solid	Error Warning. Check APP for details.
	Flash	Disconnecting from APP, quick flash indicates disconnecting and slow flash indicates successful disconnection.

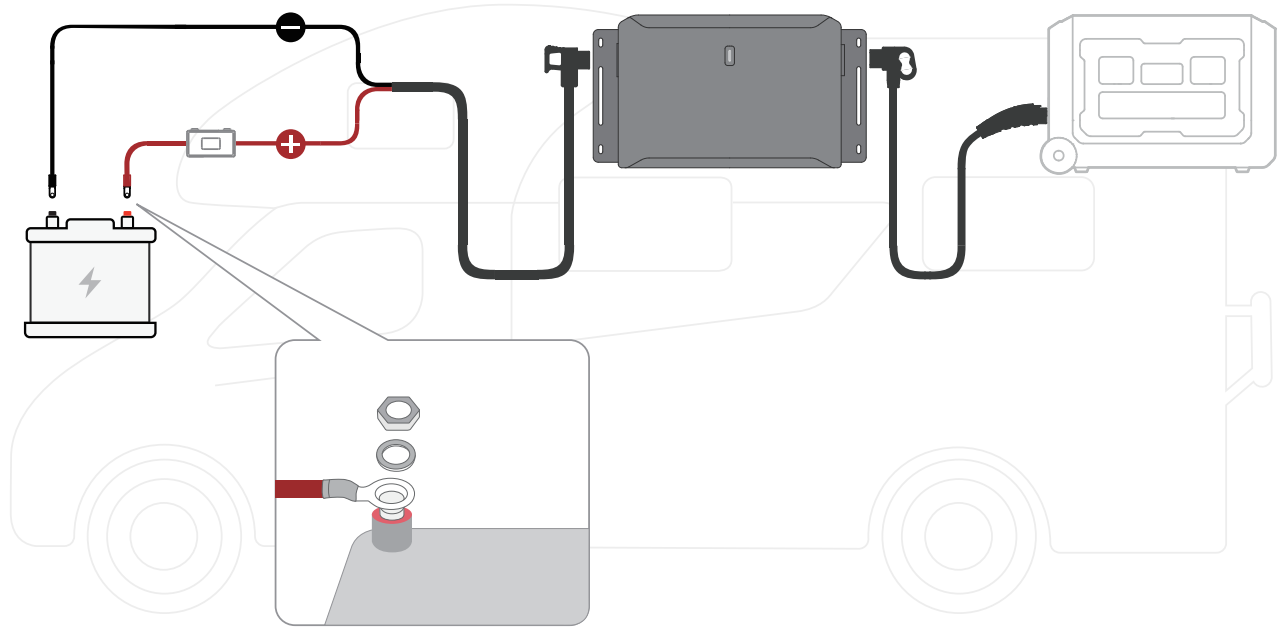
# Instructions for Use

## Wiring

Tools: spanner, insulating gloves

- 1 Turn off the vehicle, alternator charger and portable power station to avoid potential short circuit damaging the portable power station.
- 2 Unscrew the positive terminal(+) of the vehicle starter battery or RV house battery and connect it with ring terminal of red cable on vehicle battery cable. Then tighten the terminal.
- 3 Unscrew the negative terminal(-) of the vehicle starter battery or RV house battery and connect it with ring terminal of black cable on vehicle battery cable. Then tighten the terminal.
- 4 Connect vehicle battery cable to vehicle battery port on the alternator charger.
- 5 Connect portable power station cable to the portable power station port on the alternator charger, and connect another side to the portable power station. And then start the vehicle.





## Notice:

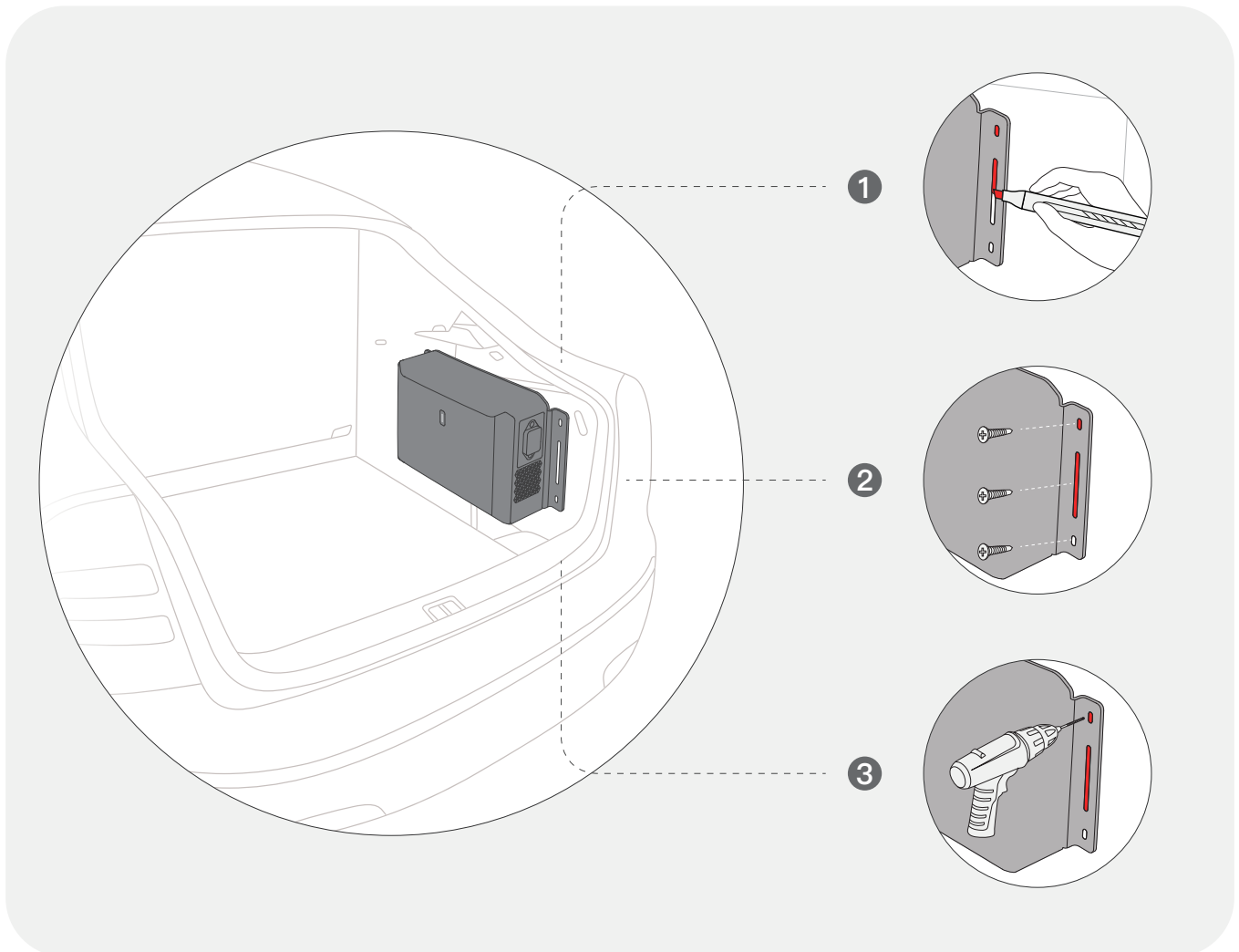
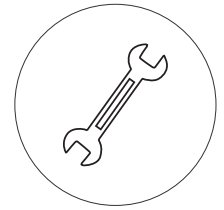
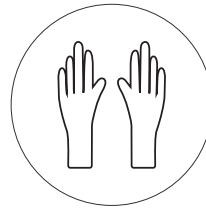
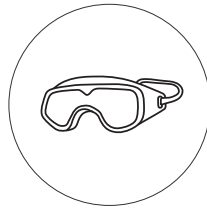
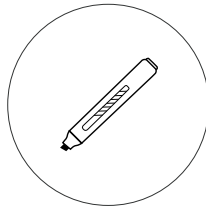
- 1 It is recommended to be installed by a professional or under the guidance of a professional.
- 2 When wiring, please wear protective equipment such as goggles and insulating gloves, etc.
- 3 Insufficient torque may result in a loose connection, leading cables melting.
- 4 Make sure the ring terminals, washers and nuts are in the correct order.

# Mounting

Tool: electric drill, marker pen, goggles, insulating gloves, spanner.

Method 1:

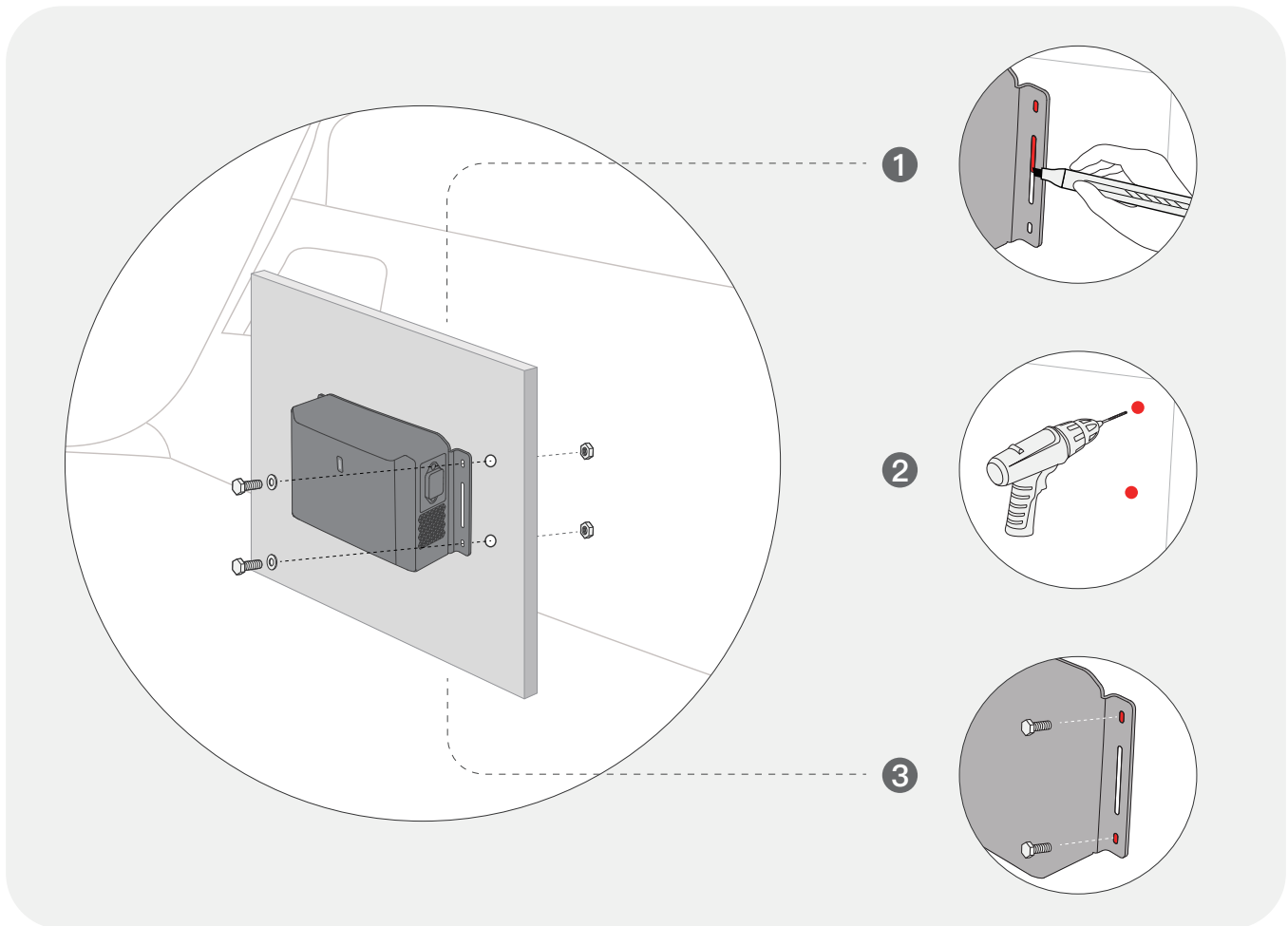
- 1 Use the alternator charger to locate the drilling positions and mark them with a marker pen on a stable and flat surface on the vehicle.
- 2 Use electric drill to screw 6\*M4.2 self-tapping screws through the holes of the alternator charger into the surface.



# Mounting

## Method 2:

- 1 Use the alternator charger to locate the drilling positions and mark them with a marker pen on a stable and flat surface.
- 2 Drill 4 holes of 4mm diameter.
- 3 Fix the installation surface to the back of the charger with 4\*M4 bolts.
- 4 Insert 4\*M4 bolts through the holes of the alternator charger into the drilling holes and then tighten the M4 nuts.

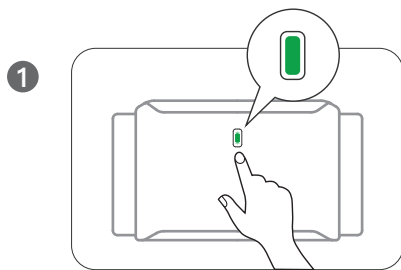


## Notice:

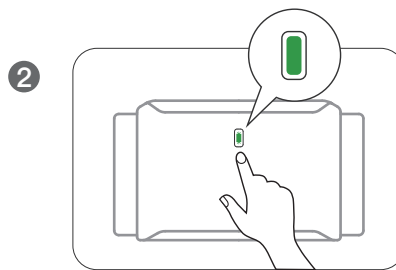
- 1 When wiring, it is necessary to avoid high-temperature, sharp, and abrasive positions, and properly fix the wire to avoid worn-out or loose interface caused by shaking.
- 2 To maintain good ventilation at all times, do not embedded-installed the alternator charger and be careful not to cover the alternator charger with blankets, etc.

# Power ON/OFF and Connection

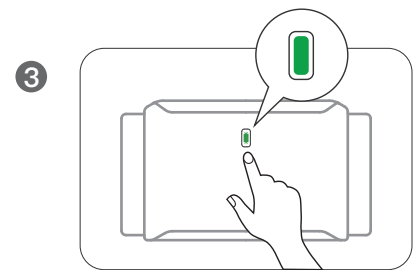
- 1 Power ON: Short press the power button for 1 second to turn on the alternator charger.
- 2 Working State: When powered on, quickly press the power button twice in a row to start working or stop working.
- 3 Switching Modes: When powered on, short press the power button for 1 second to switch modes.
- 4 Power OFF: Long press the power button for 3 seconds to turn off the alternator charger.
- 5 Download APP and turn on the bluetooth. Connect the alternator charger to the APP following the steps on APP.
- 6 Disconnection: Long press the power button for 5 seconds to disconnect from the APP. The red indicator flashes quickly to start disconnecting, and the slow flash indicates that the disconnection is complete.



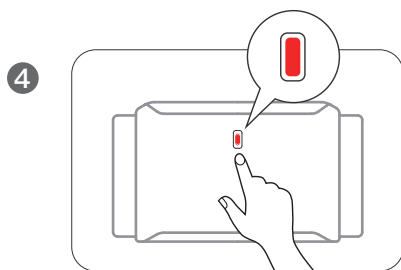
ON ⌚ 1S



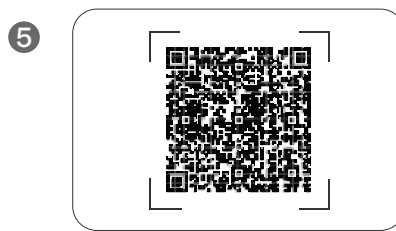
Working State 🖱 x 2



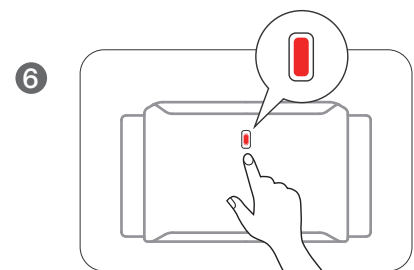
Switching Modes ⌚ 1S



OFF ⌚ 3S



Download APP



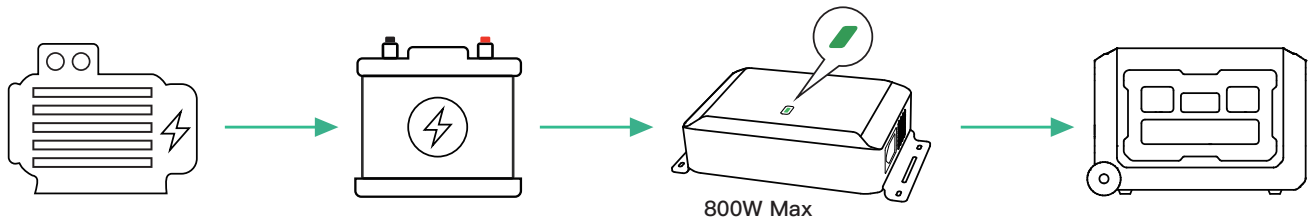
Disconnect ⌚ 5S

## Notice:

- 1 The charge mode is enabled by default when the alternator charger is turned on for the first time. After being turned on again, the alternator charger will maintain last working state.
- 2 To ensure the alternator charger functions steadily, please turn on the portable power station or extra battery after completing wiring according to the guidance, and then start the vehicle to charge.

## Charge Mode

Vehicle alternator charges vehicle battery, power flows from vehicle starter battery or RV house battery to the alternator charger, and then to the power station.



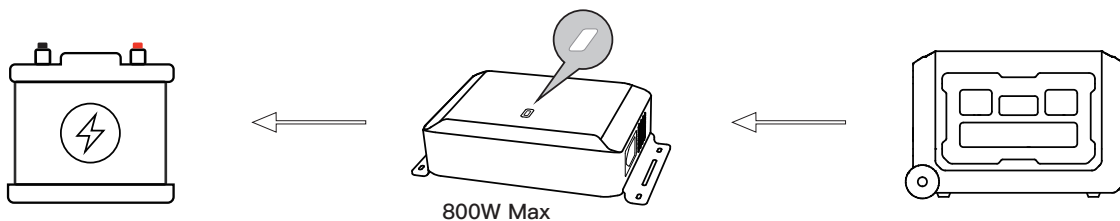
- 1 When the vehicle is in motion, the alternator charger will charge the portable power station or extra battery by the vehicle alternator's redundant power.
- 2 To prevent the vehicle starter battery or RV house battery from overdischarging, the alternator charger will detect the battery voltage in Charge Mode. If the measured value is lower than the charger's starting voltage, the charger will stop working.

### Notice:

- 1 In Charge Mode, the actual output power is influenced by the motion state and the model of the vehicle.
- 2 Pre-charging mode is enabled by default at 200W for the first minute, and the power will be adjusted to the value you set.

## Reverse Charge Mode

Power flows from the power station to the alternator charger, and then to vehicle starter battery or RV house battery.



## Reverse Charge Mode

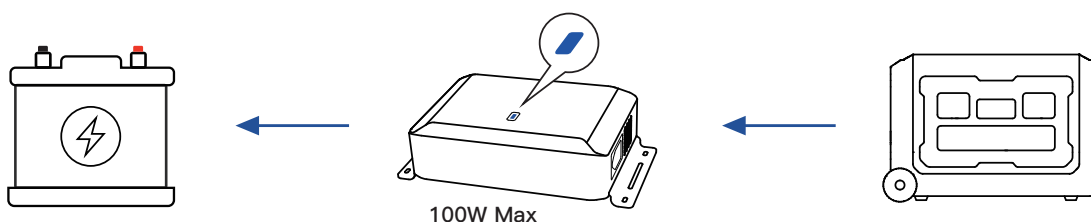
After the portable power station or extra battery is turned on, the alternator charger can charge vehicle starter battery or RV house battery at a maximum power of 800W to power parking air conditioning system, RV lighting, tailgate lift.

Notice:

Pre-charging mode is enabled by default at 200W for the first minute, and the power will be adjusted to the value you set.

## Battery Maintenance Mode

Power flows from the power station to the alternator charger, and then to vehicle starter battery or RV house battery.



After the portable power station or extra battery is turned on, the alternator charger can charge the vehicle starter battery that have not been used for a long time.

It ensures that the vehicle starter battery is fully charged if needed and extend the lifespan of the battery.

## Unplug Cables

- 1 Turn off the alternator charger and turn off the portable power station or extra battery
- 2 Unplug all the cables.

# Storage and Maintenance

- ① Please use dry, soft, and clean cloth or paper towels to clean the product.
- ② Please keep the product away from water resources, heat resources, inflammables and chemicals, etc.
- ③ Check the terminals and cables every month. If all the terminals are loose or cables are cracked, corroded or abraded, please change terminals and cables with the same guage.
- ④ Please store the product in a dry and ventilated environment, and the recommended storage temperature is:– 22°F~158°F(–30°C~70°C)

# FAQ(Frequently Asked Question)

## 1. After connecting the extra battery, it won't charge?

Please wait for one more minute, the battery will automatically recognize and charge.

## 2. LED indicator is red.

Check app interfaces for error details.

## 3. Wiring is completed but the alternator charger can't be turned on?

1) Ensure proper alignment of the positive and negative terminals between the charger and the vehicle starter battery or RV house battery.

2) Ensure that all terminals of the cables are tightly connected.

3) Ensure that the nominal voltage of the vehicle starter battery or RV house battery is 12V or 24V.

4) Check whether the battery is defective or not rechargeable.

## 4. Output power doesn't reach the maximum value?

1) Check whether you've set the output power of the charger in the app.

2) Please try to boost the alternator's output power (e.g. by pressing the accelerator) and try it again, perhaps the alternator's output power is low.

# FCC Warning

This device complies with part 15 of the FCC Rules. Operation is subject to the following two conditions:

(1) This device may not cause harmful interference, and (2) this device must accept any interference received, including interference that may cause undesired operation. Any changes or modifications not expressly approved by the party responsible for compliance could void the user's authority to operate the equipment.

Notice:

This equipment has been tested and found to comply with the limits for a Class B digital device, pursuant to part 15 of the FCC Rules. These limits are designed to provide reasonable protection against harmful interference in a residential installation. This equipment generates uses and can radiate radio frequency energy and, if not installed and used in accordance with the instructions, may cause harmful interference to radio communications. However, there is no guarantee that interference will not occur in a particular installation. If this equipment does cause harmful interference to radio or television reception, which can be determined by turning the equipment off and on, the user is encouraged to try to correct the interference by one or more of the following measures:

- (1) Reorient or relocate the receiving antenna.
- (2) Increase the separation between the equipment and receiver.
- (3) Connect the equipment into an outlet on a circuit different from that to which the receiver is connected.
- (4) Consult the dealer or an experienced radio/TV technician for help.

This equipment complies with FCC radiation exposure limits set forth for an uncontrolled environment.

This equipment should be installed and operated with minimum distance 20cm between the radiator & your body.

